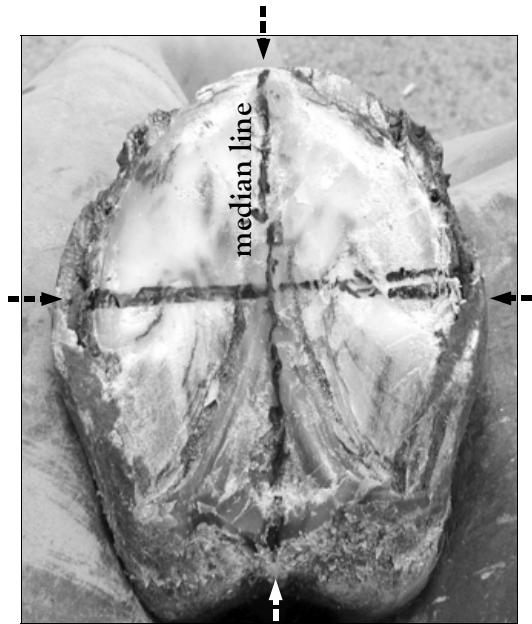


Figure 7

Here, I've marked the median line and widest expanse of the hoof. I've not fully trimmed the hoof wall yet behind the widest expanse, except to give a gradual taper from the center of the toe to the heels.



The median line is extended from the bottom of the hoof and then marked down the dorsal toe wall.



H° is measured again along the median line of the toe wall. If H° now measures higher than in Step 2 (it does, as it turns out), then the heels must be lowered sufficiently to restore H° to its approximate original value.

